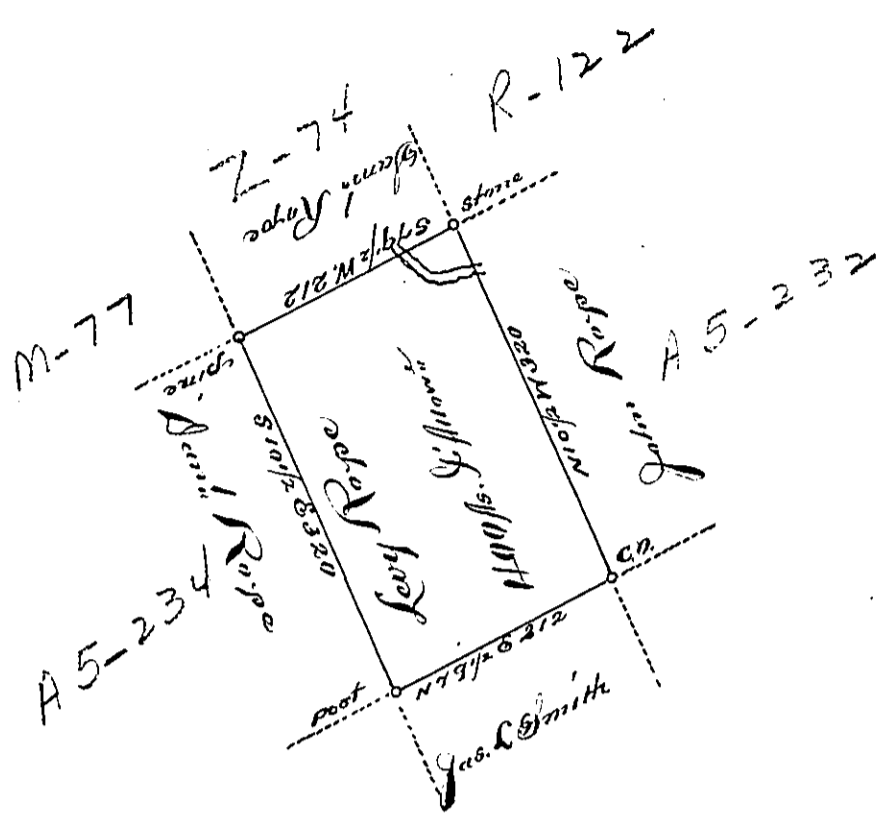



Hazle
Luzerne



A Draft of a tract of Land Called near Situate on the waters of Black
 Creek in the County of Northum^u Containing Four Hundred acres &
 Allow^d. Surveyed for Levy Royce the 5th day of October 1793. by virtue
 of a warrant dated the 13th day of June 1793.

by Wm Gray D. J.

To Daniel Brodhead Esq^t
 Sur^t Gen^l



IN TESTIMONY that the above is a copy of the original remaining on file in the
 Department of Internal Affairs of Pennsylvania, made con-
 formably to an Act of Assembly approved the 16th day of
 February, 1833, I have hereunto set my Hand and caused
 the Seal of said Department to be affixed at Harrisburg, this

sixth day of August 1895.

James Whatta
 Secretary of Internal Affairs.